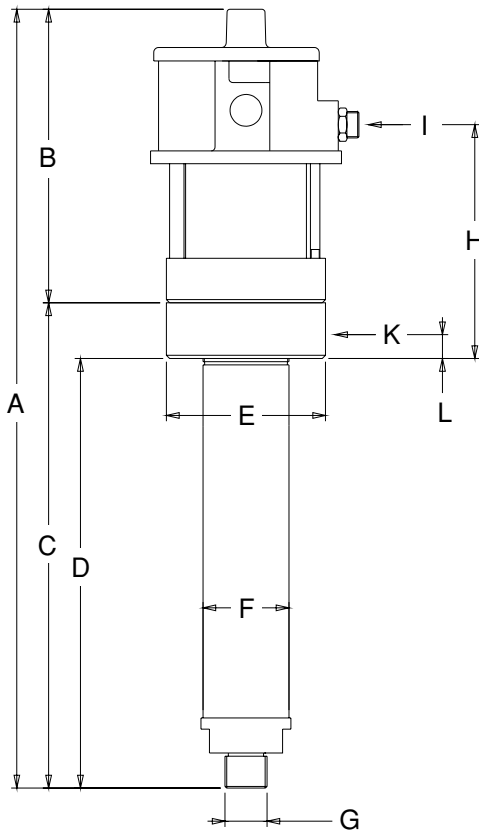


WIWA Transfer Pumps for Water

Series 75, 150



Field of Application:

Supply of water to Sand Blasting
Apparatus in Wet Blasting Process (Micro-mist)

Order ref.:

Model 75.02 R 0629442
Model 75.04 R 0621811
Model 150.02 R 0631115

Dimensions (in mm)

	Model		
	75.02	75.04	150.02
A	489,5	489,5	497
B	184,5	184,5	184,5
C	305	305	312,5
D	270	270	277,5
E	ø 100	ø 100	ø 115
F	ø 54	ø 54	ø 76
G	R 3/4"	R 3/4"	R 1"
H	147	147	147
I	R 3/8" NPT	R 3/8" NPT	R 3/8" NPT
K	R 1/4" NPS	R 1/4" NPS	R 1/4" NPS
L	15	15	15

Technical Data	75.02	72.04	150.02
Versions available	*R	*R	*R
Pump ratio	2:1	4:1	2:1
Max. free-flow output (ltr./min.)	10,0	10,0	20,0
Output per cycle (ccm)	75	75	150
Max. input air (bar)	8	8	8
Max. operating pressure (bar)	16	32	16
Fluid outlet (material pump)	1/4 NPS (I)	1/4 NPS (I)	1/4 NPS (I)
Fluid inlet (material pump)	R 3/4" (A)	R 3/4" (A)	R 1" (A)
Air inlet	3/8 NPT (A)	R 3/8 NPT (A)	R 3/8 NPT (A)

*Materials for parts in contact with pumped media:

R = corrosion resistant

WIWA Wilhelm Wagner GmbH & Co. KG
Gewerbestraße 1-3 • 35633 Lahnau, Germany
P.O.B. 29 • 35631 Lahnau, Germany
E-mail: info@wiwa.de • Internet: www.wiwa.de
Telephone: +49 (0)64 41-6 09-0
Telefax: +49 (0)64 41-6 09-50/58

Technical changes reserved.

No. 0518592 (e) · 01.01

© Copyright 1994 WIWA Wilhelm Wagner GmbH & Co. KG

Your local distributor is: